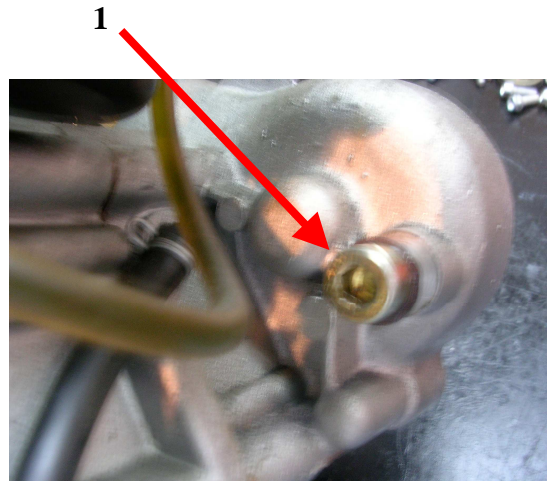


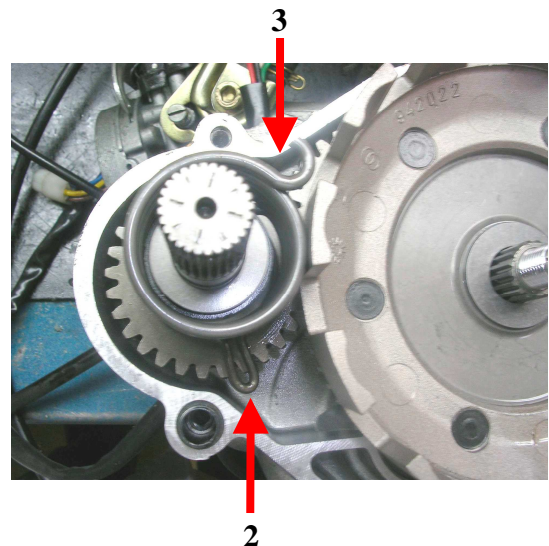
ENGINES ROOKIE Y CADET 50/70cc.

1° To release the pedal return spring, loosen the bolt shown in the photo. (Arrow Nr. 1) When the pedal moves, you will be able to remove the cover from the engine.



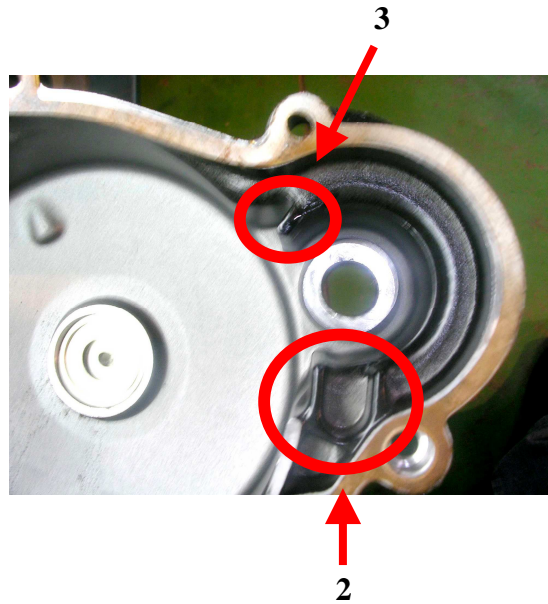
2° To mount the clutch cover, the spring of the kick start pawl must be placed in the position that is shown in the following photo (Arrow Nr. 2)

The return spring must be aligned as shown in the photo. (Arrow Nr. 3) If you follow these steps, the cover will be easy to install.



CLUTCH COVER

In this photo you can see where the two kick start springs must be positioned. (Pawl stop and pedal return) When installing the cover, for ease of installation, the springs must be aligned to match the impressions in the interior of the cover



MOUNTING OF THE CLUTCH COVER

Once mounted, take the following steps:

1. Move the pedal to the lowermost position.
2. Hold the pedal in this position (lower most) and install and tighten the screw (bolt) shown in the first photo (Arrow number 1)
3. To loosen the starting pedal.
4. At this time, you may remove the pedal and mount it in the best position for operation.