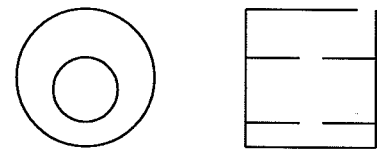


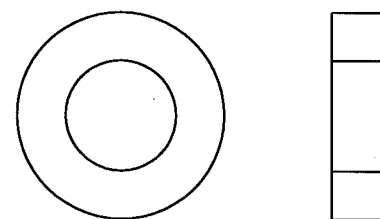
ITEM 1  
BACK PLATE

0.188 THICK PLATE  
SLOT WIDER ON SIDE AGAINST  
FORK LEG, MATCH TAPER OF  
LUG



ITEM 3  
BOSS

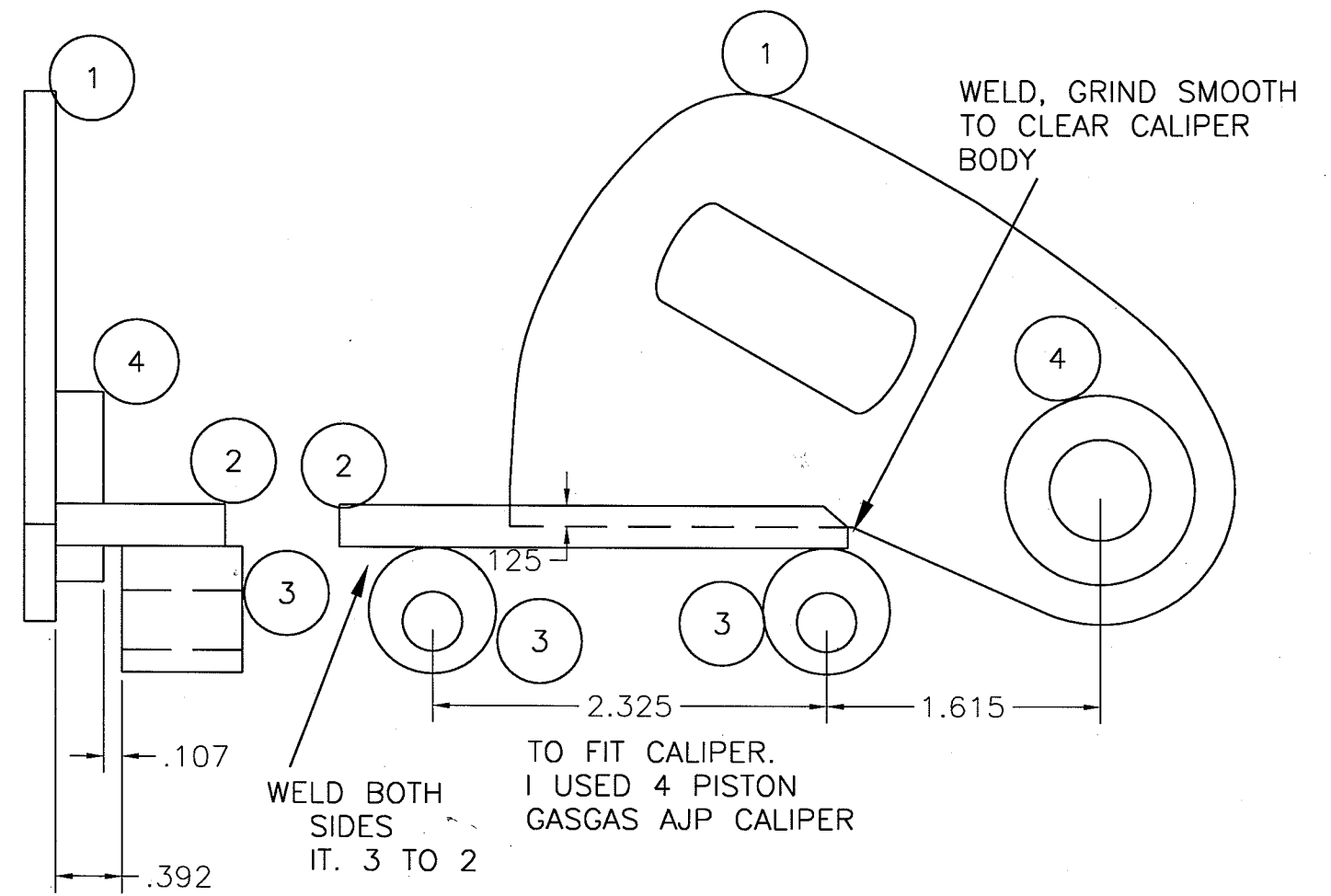
.75 OD  
.700 TO .725 LONG  
.352 HOLE, CLEARANCE FOR  
8 MM BOLT, OFFSET ABOUT  
.062 FROM CENTER, SO  
CALIPER CLEARS BAR 2



ITEM 4  
SPACER  
WASHER

1.00 TO 1.125 OD  
0.600+ ID  
0.285 THICK  
MACHINED PART, OR TWO  
STACKED FLAT WASHERS

ITEM 2  
BAR .25 X 1 X 3



FABRICATION

1. FAB, WELD, AND MACHINE TO DIMENSIONS IF EQUIPMENT IS AVAILABLE.
2. FOR HOME SHOP, FAB, WELD AND DRILL.
3. TACK WELD OPPOSITE SIDES, IT. 2 TO 3. CHECK FOR SQUARE AND ADD MORE TACKS.
4. WELD SPACER 4 TO PLATE.
5. WELD 3 TO 2. THIS LOCATES CALIPER .107 FROM INSIDE EDGE OF FORK LEG BOSS AT AXLE. GRIND WELD AND END OF 2 TO CLEAR CALIPER.
6. ALL DIMENSIONS APPROXIMATE. I HAND MADE BRACKET, THEN MEASURED AFTERWARDS.

DISC BRAKE MOUNT BRACKET  
YAMAHA TY250 350 MONOSHOCK  
2003 KCJ LstRv: 25Apr06 kcj